

Special Forces SIGINT_{with} Κρυπτο500 + Κρυπτο1000

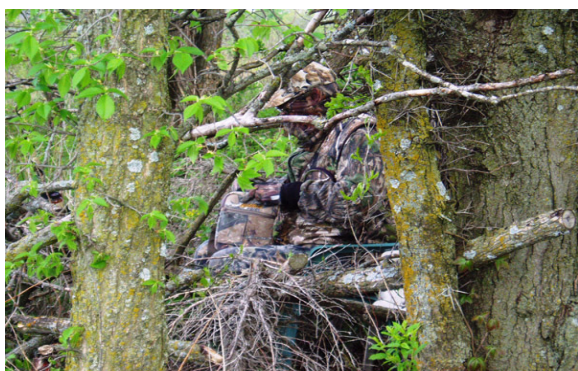
SPECIAL INTEREST TO SPECIAL FORCES

Krypto500 and Krypto1000 have been highly-optimized to deliver the utmost in performance with the least impact on your CPU and RAM configurations in a variety of SIGINT missions.

Of special interest to special forces, clandestine and tactical units are standard tools that can assist with any of these SIGINT functions:



Manned: Comprehensive tools can be operated from the smallest of PCs to facilitate Collection, Control, Analysis, Classification, Decoding and Fingerprinting for any COMINT mission. Our suites are already compatible with leading man-pack and body-worn systems and can be easily made compatible with others.

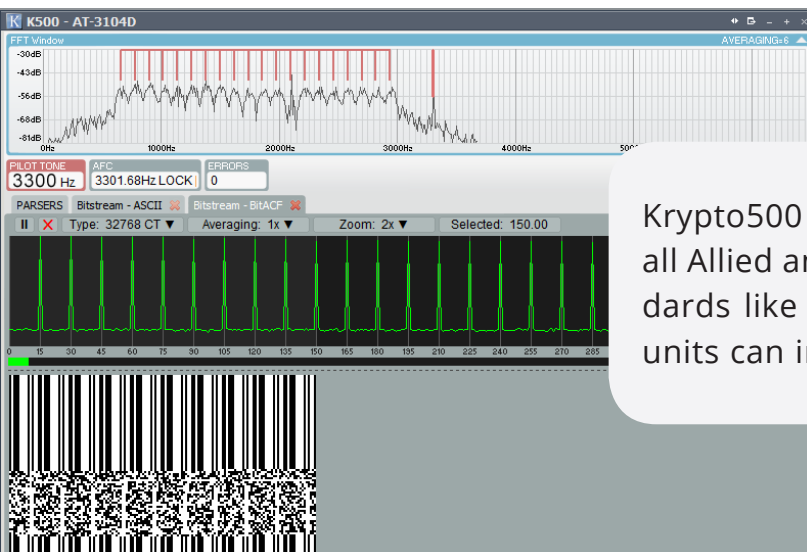


Unmanned: Again, the comprehensive tools in both the Krypto500 and Krypto1000 suites are designed to be set up to run with no intervention, and can *automatically trigger collection and recording* of specific events, scan known channels, and with their built-in networking tools, forward the data to analytic centers or national agencies – from anywhere on the planet.



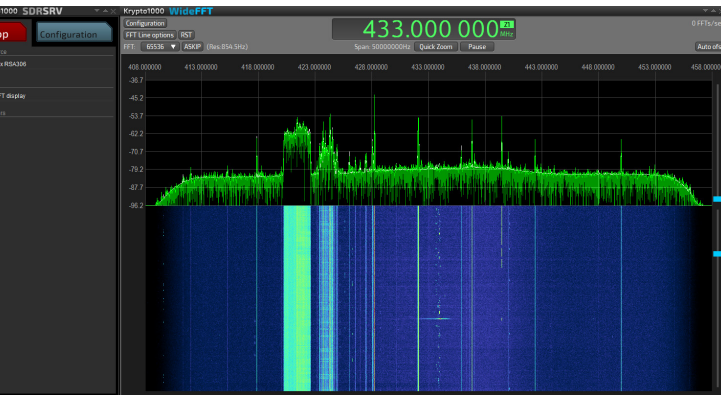
Unattended: Where no continuous connection to the PC hosting Krypto500 or Krypto1000 exists, all of the abovementioned features may simply be set up once and left running for later recovery. If an unattended system can be communicated with periodically, the mission may be modified very quickly – in seconds, not minutes, and collected materials offloaded as well.

All of the features of Krypto1000 that apply to this mission area are standard features and immediately compatible with any hardware in operation. The software is tightly-integrated with more than 300 leading receivers, SDRs and other COMINT and SIGINT equipment and systems.

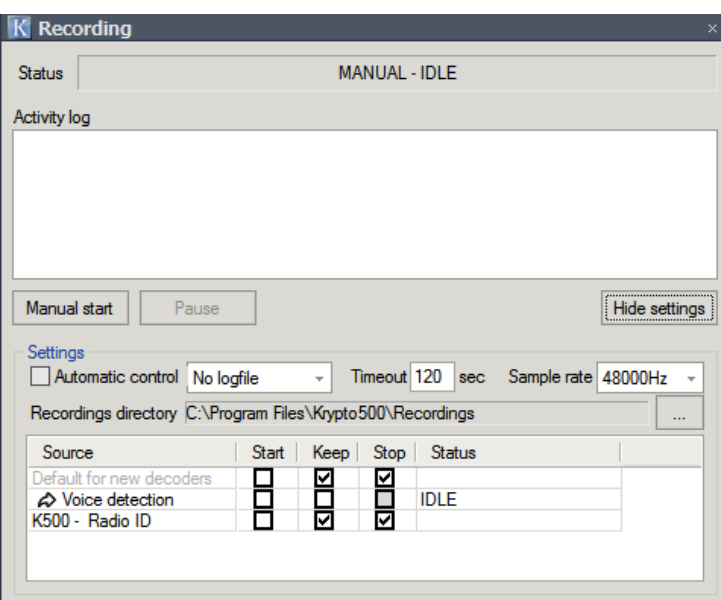


Krypto500 and Krypto1000 are also fully-compatible with all Allied and National output and reporting format standards like VITA49 and MidasBlue, meaning that tactical units can immediately contribute to national missions.

A few of the many ways we can help you produce more critical intelligence are briefly outlined below:



HD DISPLAYS – beautiful, purpose-built HD displays allow you to see everything! If you cannot visualize target activity, you cannot prosecute it.



COLLECTION TOOLS – Krypto500 and Krypto1000 contain tools to automate and schedule collection, recording, decoding and forwarding of any activity of interest. Operation can be manual or automatic and attended or fully-unattended for clandestine / leave-behind applications. An unlimited number of triggers based on any modem decoder in any combination with both fingerprinters (RadioID) and voice detectors, may be used to automatically allow monitoring or collection of a target activity.

NODAL ANALYSIS – The tools built in our DMR, TMR, LMR and CTCSS modules allow you to track individual radios, talk groups and other network / targeted organization hierarchies. Quickly ascertain key nodes of a network for targeting.

SESSION FILES – Built with the SIGINT / COMINT professional in mind, it is natural that we allow one-click saving and 2-click operation of complex missions. Simply save your workspace as a session files and all modules, settings and control settings can be re-opened and the mission immediately placed in operation by opening the appropriate session file.

HAVE A QUESTION?



We are here to help. And the best thing of all - we will give you an honest and responsible answer to your questions. Contact us today at info@comintconsulting.com!

Krypto500 and Krypto1000 is controlled by the US International Traffic in Arms Regulations (ITAR) 22 CFR §120-130. It may not be exported or transferred to any other foreign person, foreign country or foreign entity without prior written approval from the U.S. Department of State and COMINT Consulting LLC.

© COMINT Consulting LLC. As it is our intent to continuously improve our products, COMINT Consulting reserves the right to make changes to specifications and features without notice. COMINT Consulting and COMINT Consulting's logos are trademarks of COMINT Consulting LLC.



www.COMINTconsulting.com
info@comintconsulting.com